

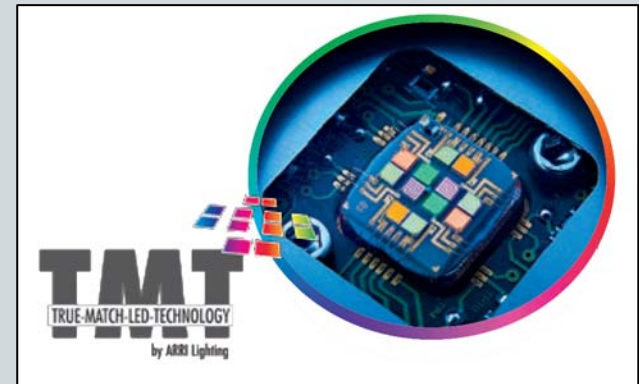


**Lighting – One Step Beyond**

## True Match LED Technology by ARRI Lighting

Developed through years of research, ARRI's advanced light control system utilizes intelligent algorithms to ensure consistent illumination for the most demanding applications. The result is True Match Technology, providing:

- ▶ Natural light characteristics
- ▶ Single shadow rendering
- ▶ Consistent light output
- ▶ Absolute color stability





# LED Pack Shot Kit – Fieldtest



## New Technology – LEO

- Innovative multi channel LED array
- 2.000-20.000K Tc (continuously)
- Digital colour gels
- RGB effect colours
- Very high colour rendition
- $\mu$ P controlled light engine
- Stabilizing algorithm
- Efficient package for optical performance



# LED Pack Shot Kit – Fieldtest

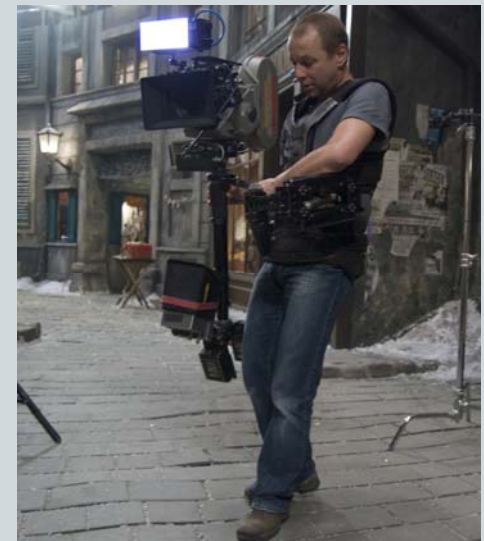


## Fieldtest Setup

- Modular LED panels
- Exchangeable optics
- WIFI control
- Backpack batteries
- Optional PC/DMX control
- Holographic beam shapers



# LED Pack Shot Kit – Fieldtest



## NAB 2009 Product Introductions

- ▶ **PAX<sup>1</sup>** - One PAX panel, Mini Controller, Batteries and Optics
- ▶ **PAX<sup>2</sup>** - Complete setup with two PAX panels, wireless control, DMX control, PC software control different optics and a variety of accessories
- ▶ **PAX<sup>EXT</sup>** - tbd. *(probably 2 PAX panels with accessories)*

➔ Availability: Middle of June 2009

## Future Products 2009



SingLEO



QuadroLEO

Tungsten reference 3200K, ARRI 650



ARRI PAX 3200K

Tungsten film stock, ARRICAM

Daylight reference HMI 5600K, Compact 200



ARRI PAX 5600K

Daylight film stock, ARRICAM



Conventional white light LED panel

High profile solutions for:

- Motion Picture
- TV Broadcast
- Theatre
- Event
- Still Photography
- Industrial
- Architainment

# ARRI L.E.D. Systems Background Cyclorama Projects



Studio rbb, Berlin 2007 (2700 BLMs, 800sqm LED based background lighting)

## Main Features

- 100° beam angle
- RGB Power LED module
- Optional white light LED module
- 25W max. @ 100% RGB setting
- PWM dimming (Pulse Width Modulation)
- 24VDC
- DMX 512
- Modular Power Track system
- 16,7 million saturated colours

## Benefits

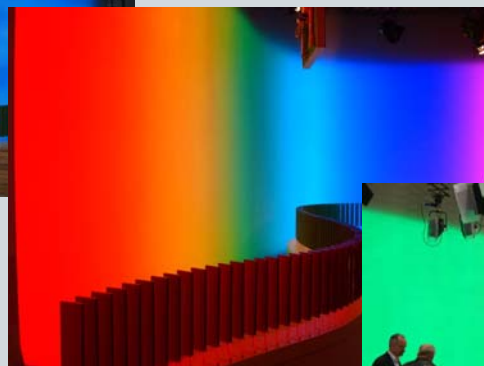
- Plug & Play functionality
- Configuration as limitless arrays of size & shape
- Easy integration into rigs and sceneries
- Unprecedented soft colour mixing
- Solid state technology
- Outstanding lamp lifetime
- Economical & efficient operation
- No front heat dissipation
- Instant light & colour levels

# ARRI L.E.D. Systems Background Cyclorama Projects



## Project Installations 2008

- DWTV Berlin – 72sqm Cyclorama



# ARRI L.E.D. Systems Background Cyclorama Projects



## Project Installations 2008

- Kammerspiele München - 72 modules (36 x RGB / 36 White)
- Target 1: high quality white light + RGB effect colours
- Target 2: flexible attachment for various setups



# ARRI L.E.D. Systems Background Cyclorama Solutions



# ARRI L.E.D. Systems Background Cyclorama Solutions



# ARRI L.E.D. Systems Background Cyclorama Solutions



# IPTV LED Panel



# IPTV LED Panel



Product name: ARRI LoCaster (BroadCaster → DMX version)

## Specification:

Light output

650cd = 650lx @ 1m @ 65° HPA  
→ 61fc @ 3ft @ 65° HPA



CRI

90

Supply voltage

11-36VDC

Power consumption

max. 60W / min. 40W (depending on supply voltage)

Efficiency

approx. 35lm/W

Control

built in dimmer, 0/I switch and Tc  
rotary switch with 2800K, 3200K, 4000K,  
4800K, 5600K, 6500K

Size (LxWxD)

218x95x70mm

Weight

960g, panel only

Attachment

3/8" thread

Accessories

2-leaf barn door, intensifier, power supply,  
5m XLR 4-pin ext.-cable, adapter cables,  
Noga Arm, battery pack, case

Options

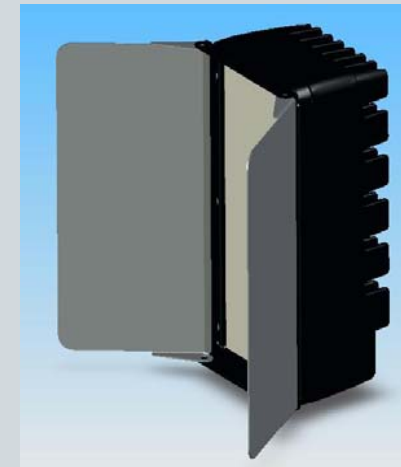
Inline controller: dim, Tc, +/-green → availability tba.

List price

999,-EUR (panel only)

Availability

May 2009



Caster panel with 2-leaf barndoor



BroadCaster operation panel



LoCaster operation panel